



WINTON LANDSCAPE RAKE WLR SERIES



OWNERS MANUAL

PLEASE READ THIS MANUAL BEFORE OPERATING THE MACHINE

Congratulations on purchasing your new **Winton** machine!

Before you get started, we have provided a helpful space to jot down a few important details about your new Winton machine.

Model Number: **WLR**

Serial Number:

Date of purchase:

Factory Reference: 5LRH, 6LRH

This manual should be considered a permanent part of this machine and should remain with it even if the machine is subsequently sold.

Winton continually seeks advancements in its product design and quality. Therefore, while this manual contains the most current product information available at the time of printing, there may be minor discrepancies between your machine and this manual.

If you have any questions concerning this manual, please consult your local dealer.

First Published: March 2021

General Safety Information

Ensure all potential operators read this manual thoroughly before using the machine.

Safety: Ensure tractor and machine is stationary and keys out of ignition before set-up/maintenance.

Safety: Failure to follow good safety standards could result in severe injury or even death.

Misuse: This machine is designed for use with compact tractors, and should be used only for the indicated purpose. Winton does not take responsibility if the machine is used for any other purpose. Children must not operate the machine under any circumstance.

Modification: Do not modify equipment in any way. This may impair the operation and overall safety of the machine.

Tractor requirements: Use only with compact tractors within power range specified.

Misuse transport: Do not use machinery to transport personnel or livestock.

Condition: For the safety of personnel and optimum performance of the machine, you should check the condition of the machine and the tractor before starting. Before use check all nuts and bolts are tight.

Spatial awareness: Always check the operating area is safe before starting machinery.

Operator clothing: The operator should not wear loose clothing while operating machinery.

Safety wear: Always use appropriate ear protection when running a tractor and machinery. Ensure you are wearing protective gloves when servicing and using machinery.

Bystander safety: Ensure bystanders keep away from the machine when it is in use. Do not touch moving parts when the machine is at work.

Public places: When travelling on the road/public places, always keep the PTO turned off.

Maintenance: Always keep the machine maintained and in a good state. Where necessary, repair or replace any defective parts. Do not modify the machine.

Sharp objects: Pay attention to the sharp/pointed parts while servicing the machine.

Safety guards: All protective parts should be in good condition before operating machinery.

Safety signs/stickers: Keep all safety signs clean and legible. Replace any which are missing or illegible. If a component with safety sign(s) is replaced, make sure new safety sign(s) are attached in the same locations.

Operating speeds: Machinery and PTO should be operated at the recommended speed at all times.

Safety awareness: Good safety requires that you familiarise yourself with various safety signs, the type of warning and the area, or particular function related to that area.

Alertness: Never consume alcohol or drugs as these can hinder alertness/coordination. Consult your doctor about using this machine while taking prescription medications.

General Safety Information (Continued)

Machinery Pre-Use Checks

On receipt of your new Winton machine and again within the first 4 hours of use, or the 'shake in period', we always recommend checking over the machine.

- Check all bolts, nuts and screws are tight on the unit.
- Tighten/check any bolts and nuts securing blades.
- If your machine has belts check the tension and adjust if required.
- Apply grease to grease points if necessary.
- Check gear oil level and top up if needed. Do not overfill.

Tractor Pre-Use Checks

Check that the machine is properly attached to the tractor. Ensure that secure pins are used on the linkage mounting pins.

Be sure to add extra weights to the front of the tractor or add wheel weights if required.

Check that the tractor PTO shaft turns freely and that the machines PTO drive shaft can extend easily. Grease the PTO drive shaft using the grease points.

The chain on the PTO shaft should be checked and in a good condition. The universal joints installed should be in a good state, with proper protective parts.

Before installing the PTO shaft, the tractor and machine should be stopped and the key removed.

Install and secure all safety guards, doors and covers before starting.

Bystanders should leave the immediate area before connecting the drive to the tractor.

Running/Operating Checks

- Always keep the PTO output from the tractor at **540 RPM** when running machinery.

Post-Use Regular Checks

Check blades, belts and wearing parts. Be sure they are not damaged and blades swing freely in their mount. Repair or replace as required.

Clean machinery and check for/clear any entangled material which may have got stuck around the rotating parts.

Contents

	General Safety information	Pg. 1-2
1.	Dimensions and Specifications	3
2.	Installation & Set Up	4
3.	Parts Diagram	6
4.	Parts List	7
5.	Winton Product Warranty	8

1. DIMENSIONS & SPECIFICATIONS

Model	WLR5	WLR6
Weight	126kg	185kg
Recommended Tractor HP	20-45hp	25-55hp
Working Width	150cm	180cm
Linkage Size	Category 1	Category 1

*All specifications are subject to change without notice.

2. Installation & Set-Up

Safety: Ensure tractor and machine is stationary and keys out of ignition before set-up/maintenance.

Safety: Before attaching/detaching machinery ensure the hydraulic lift system is in a neutral position.

You will need:

Your tractor, tractor top link arm (adjustable), and linkage pins .

Attaching The Machine

Start by finding a flat piece of ground. Lower the three point linkage on your tractor to its lowest position and attach the machine to the tractor using the three point linkage pins and linch pins.

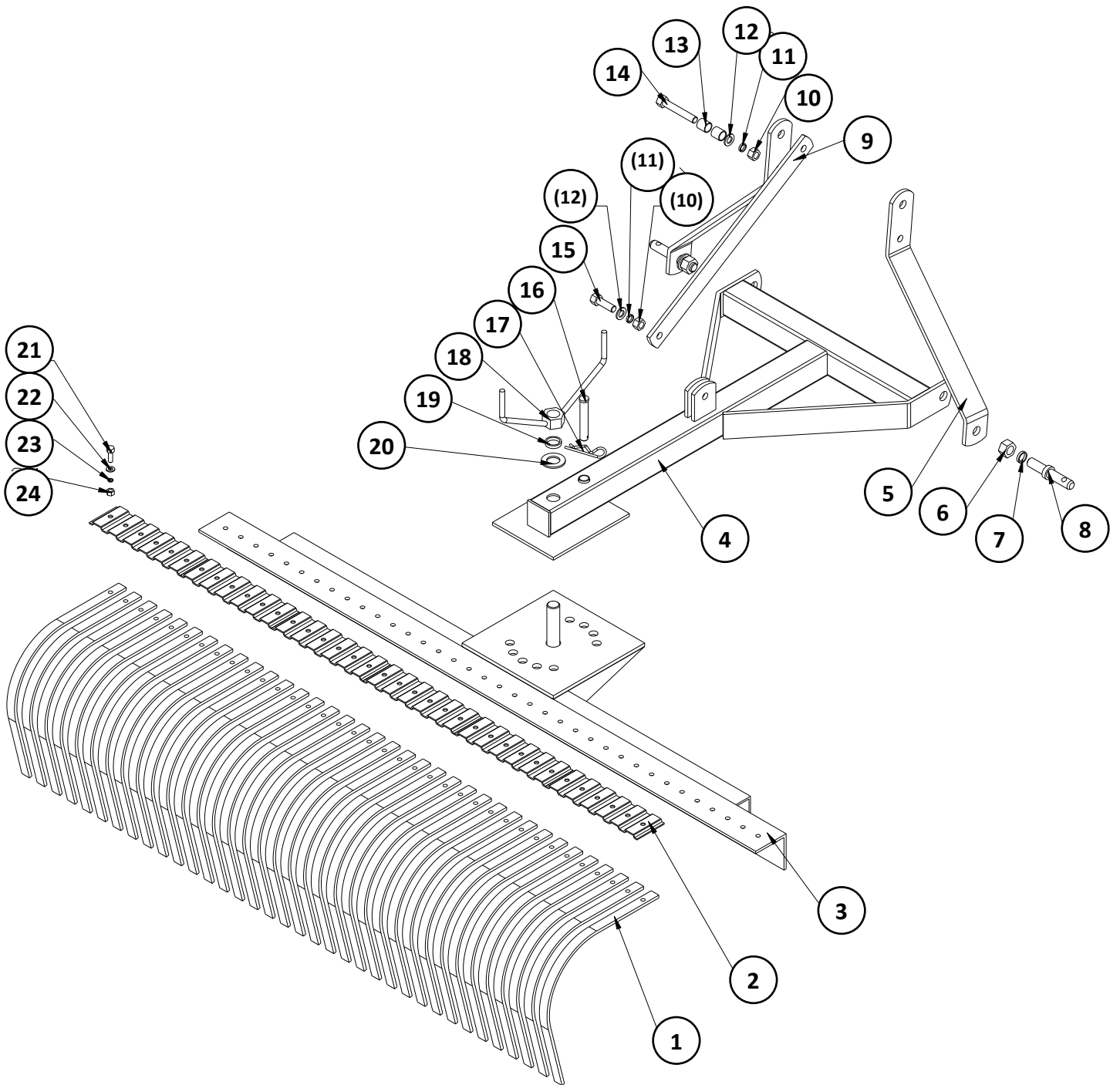
Pre-Use Checklist

Before starting the machine, always check and adjust the following:

- Tightness of all bolts, nuts and screws.
- All protective guards are in place before operating.

Notes

3. Part Diagram



4. Parts List

Dia No.	Part Number	Part Description	Qty
1	6LR.00.101	Rake tine	36 (6ft)
	5LR.00.101	Rake tine	30 (5ft)
2	6LR.00.102	Cover plate	6 (6ft)
	5LR.00.102	Cover plate	5 (5ft)
3	6LRH.00.010	Tine bar weldment (6ft)	1
	5LRH.00.010	Tine bar weldment (5ft)	1
4	6GBH.00.020	Mount frame weldment	1
5	6GBH.00.102	Side bar	2
6	GB6170- M22x1.5	Nut M22x1.5	2
7	GB93-22	Lock washer 22	2
8	6GB.00.104	Hitch pin	2
9	6GBH.00.101	Brace	1
10	GB6170- M16	Nut M16	2
11	GB93-16	Lock washer 16	2
12	GB97.1-16	Plain washer 16	2
13	6GB.00.106	Steel collar	2
14	GB5782- M16x100	Bolt M16x100	1
15	GB5783- M16x50	Bolt M16x50	1
16	6GB.00.105	Pin	1
17	6GB.00.107	Hitch pin	1
18	6GBH.00.030	Nut M36	1
19	GB93-36	Lock washer 36	1
20	GB97.1-36	Plain washer 36	1
21	GB5783- M10x30	Bolt M10x30	36 (6ft)
			30 (5ft)
22	GB93-10	Lock washer 10	36 (6ft)
			30 (5ft)
23	GB97.1-10	Plain washer 10	36 (6ft)
			30 (5ft)
24	GB6170- M10	Nut M10	36 (6ft)
			30 (5ft)

5. Winton Product Warranty

We always strive to create great products, but when something does go wrong we have a strong network of resellers on hand throughout the UK to help out.

Warranty Claims

Before you get in touch here are 5 pieces of information your Winton reseller will need to progress your claim:

- Your invoice/order details - to include date of purchase
- Machine model number
- Machine serial number
- Details of the fault
- Images/videos of the fault

The Terms & Conditions

All products purchased as new are covered under our 12 month warranty from the date of purchase. During this period Winton will repair or replace defective parts free of charge. This warranty is given on the proviso that the product has been used and maintained according to the Owner's Manual.

Warranty is carried out on a return to reseller / manufacturer basis and excludes any labour or delivery / collection costs.

Exclusions

- Wearing parts are excluded; including but not limited to blades, belts and bearings.
- Modification of the product in any way will cease the manufacturers warranty.
- The machine is warranted for one year to the original purchaser, resale within the period will cease the warranty.
- Damage in transit is not covered. Claims will need to be made through the courier or your Winton reseller directly.
- Compensation for down-time, labour or loss of earnings is not covered by the warranty.
- No warranty extension will be granted for replacement parts fitted.
- Damage caused by continued use of a faulty machine will not be covered.

Your **Winton** reseller will provide their own terms and conditions upon purchase, consult this for any additional queries.

Notes



W Winton

www.wintonmachinery.co.uk